

By Simon Batterbury, Professor, Lancaster Environment Centre, Lancaster University, UK and Principal Fellow, School of Geography, University of Melbourne, Australia.

<http://www.simonbatterbury.net>

I am working in the UK from January 2017. I am at <http://www.lancaster.ac.uk/lec>. Here are the research students I have been working with, almost all at Melbourne in Australia. The unifying themes are 'environment and development' and 'political ecology'. So far, my students at Melbourne have come from Australia (10), Canada (3), Pakistan, Indonesia, Thailand, Trinidad, Philippines, South Africa, Nepal, Mexico, New Zealand (2), Colombia (2), Chile (3), Cambodia, Vietnam, Ecuador, Russian Federation and China, with the rest from the US and Britain. I am still in touch with many of them.

I was involved with 7-9 PhDs and 1/2 Masters and Honours at one time, but at Lancaster it will be much less. For PhD you need a background as strong as those students listed below – usually a good Masters and a chance of a scholarship.

Email Directory of Melbourne student emails. <http://directory.unimelb.edu.au/>

Post-doc

1) Nov. 2012. Dr Matthias Kowasch, visiting scholar (PhD Geography, Montpellier/Heidelberg).

Now lecturer in Geography, University of Graz, Austria. Working on 2 articles and a shared project in northern Grande Terre, New Caledonia, funded by CNRT. Revisited Melbourne as research fellow – 2016 (twice)

- Kowasch M., S.P.J. Batterbury, M. Neumann. 2015. Contested sites, land claims and economic development in Poom, New Caledonia. *Settler Colonial Studies* 5(4): 302-316.



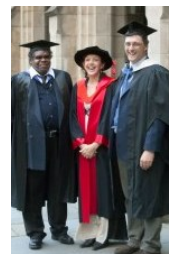
PhD students graduated/submitted (12) *=main supervisor

Date, name, previous degree, title, funding, notes

1) *2006-2009. Dr. Lisa Watts (MA, Charles Darwin University, PhD Melbourne) *A political ecology of Warlpiri water rights: a denial of access and land alienation to perennial water sources on leased lands in the Western Desert.* (APA - Australian Postgrad Award).

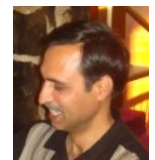
A longtime activist for Indigenous rights and resident in Yuendumu and Alice Springs, Lisa graduated in '09 and was a research fellow at Charles Darwin University, then the Centre for Indigenous Education, Univ. of Melbourne, and Australian Indigenous Psychologists Association. Now a consultant and filmmaker in Darwin. PhD supervised with Brian Finlayson, Simon Fisher (he's on the left).

- Press article <http://voice.unimelb.edu.au/volume-6/number-4/traditional-water-knowledge>
- Films: *Mer Rrkwer-akert (Brooks Soak Country)*, on denial of access and land alienation. <http://tinyurl.com/3xzn4q5>, *Sammy Butcher Out of the Shadows*. <http://tinyurl.com/352jxlt> Both screened nationally on ABC. *Big Name No Blanket* won the Foxtel Australian Documentary Prize 2013.



2) *2005-2009. Dr. Muhammad Ahsan Rana (MA, Qld, PhD Melbourne) *Formalising the informal: the commercialisation of GM cotton in Pakistan.* (MIRS Uni. Melbourne scholarship)

Associate Professor, Suleman Dawood School of Business, [Lahore University of Management Sciences](http://www.lum.edu), Pakistan. Ahsan wrote an excellent thesis, which showed GM cotton in Pakistan causes 'accumulation by dispossession' of less powerful farmers, and that growth of allegedly 'unlicensed' Monsanto BT cotton does not actually contravene patent law. He is a former civil servant who also worked as a consultant and in small farmer support 2009-13. 2nd superv. Dr Vicki Schubert.



- Rana, M.A., H. Khawar, A.T.Gilani, H. S.Rana. 2013. [Exploring dynamics of cotton seed provision in Sindh: informing policy and business decisions](#). Pakistan: International Growth Centre.
- Rana, M.A. 2013. *Seed provision in Pakistan: regulation, politics and entrepreneurship*. Washington DC: IIFPRI.
- Press, Nov.2010 <http://www.pakistantoday.com.pk/2010/11/higher-cotton-productivity-imperative>
- Abstract and PhD download <http://repository.unimelb.edu.au/10187/7097>

3) 2005-2010. Dr. Anna Witasari (MSc, Edinburgh, PhD Melbourne) *Changing practices: negotiation, identity and social capital in protected area management – Lampung, Indonesia*. (AUSAID scholarship).



Now at the Indonesian Forest Service in Bogor directing a Division on community-based plantation forestry. PhD looked at communities that still live within 'protected' forestry areas even though legally they shouldn't - a reality in Indonesia. Supervised with Drs Ruth Beilin and Ruth Nettle.

- Witasari, A.I. 2016. [Trust building to coordinate collective action in reforestation program](#). *Jurnal Manajemen Hutan Tropika* 22(3): 192-201

4) *2008-2011. Dr. Sean Sloan (MA, Geography, McGill, Canada; PG Dip, U South Pacific, Fiji; PhD Melbourne) *Forest regeneration in Panama, 1980-2008: the forest transition and REDD+*. (SSHRC Canada Doctoral Award, MRS scholarship, CSIRO Climate Adaptation flagship award, Lindbergh Trust, earlier OAS award)



Now a postdoc with [Prof Bill Laurance](#) at James Cook University, Qld. [New email](#). Sean is Canadian, and an expert on multi-method analysis of land cover change in the tropics, and spatial data handling. A complex PhD completed in 2.5 years. 2nd supervisor Prof. Nigel Stork. A publication machine: a few relevant ones from Melbourne work:

- Sloan, S. 2016. [Tropical forest gain and interactions amongst agents of forest change](#) *Forests* 2016, 7(3), 55; doi:[10.3390/f7030055](https://doi.org/10.3390/f7030055)
- Sloan, S. and Pelletier, J. 2012. How well may we project forest-cover change: a validation of a projected forest baseline for REDD+. *Global Environmental Change* 22: 440-453.
- Sloan S. 2012. Historical tropical successional forest cover mapped with Landsat MSS Imagery. *International Journal of Remote Sensing* 33(24): 7902-7935.
- Sloan S. 2010. Remote sensing for modelling socio-environmental change in the tropics at large geographic and temporal scales. PERN Network <http://tinyurl.com/3y7xyv4>
- Oestreicher, J. S., K. Benessaiah, M. C. Ruiz-Jaen, S. Sloan, K. Turner, J. Pelletier, B. Guay, K. E. Clark, D.G. Roche and M. Meiners 2009. Avoiding deforestation in Panamanian protected areas: an analysis of protection effectiveness and implications for reducing emissions from deforestation and forest degradation. *Global Environmental Change* 19(2): 279-291. <http://tinyurl.com/363rjxl>
- Sloan, S. 2008. Reforestation amidst deforestation: simultaneity and succession. *Global Environmental Change* 18:425-441. <http://tinyurl.com/3x2kc64>

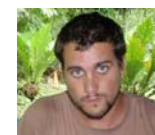
5) 2008-2012 Dr. Xinwen Chi (MSc Development Studies, LSE; PhD, Melbourne) *Formal and informal electronic and consumer waste recycling in China*. (MFRS, Univ. of Melbourne and self-funded). 1st supervisor Mark Wang, I was 2nd supervisor.



Lecturer, South China U. of Technology, China. Was at Jiangnan University until 2015. Ambitious thesis looking at what really happens to electronic waste in China. You will be surprised.

- Chi X, M.Y.L. Wang, M.A. Reuter. 2014. E-waste collection channels and household recycling behaviors in Taizhou of China. *Journal of Cleaner Production* 80:87-95.
- Chi X, M. Streicher-Porte, M.Y.L. Wang, M.A. Reuter. 2011. [Informal electronic waste recycling: a sector review with special focus on China](#). *Waste Management* 31: 731-742.
- Streicher-Porte, M. Kummer, X Chi, S Denzler, X Wang. 2010. Chinese e-waste legislation, current status and future development. *Environmental Law Network International Review* 1/10: 7-17.

6) *2010-2015 Dr. Paul Munro (MA, Geography, King's College London, BA Sydney, PhD Melbourne) *Controlling nature: a history of forest management and conservation in Sierra Leone*. (APA - Australian Postgrad Award; [FAO ACP-FLEGT](#) project). 2nd supervisor Prof. Tony Binns, U. of Otago, NZ.



Paul (from Sydney) is a permanent [Lecturer in Environmental Humanities](#), University of New South Wales (since 2014). Fieldwork was done from 2011-2012 in Europe and W. Africa. Previously he worked and lived in Uganda, Liberia, Mexico and Sierra Leone, and completed a Masters on logging on the Freetown Peninsula.

- Many publications, see <http://www.paulgmunro.com/publications/>

- Latest: Munro P.G. and G. van der Horst. 2016. [Contesting African landscape: a critical reappraisal of Sierra Leone's competing forest cover histories](#). *Environment and Planning D: Society and Space*. 4(4): 706-724
- NGO: <http://www.energyforopportunity.org/>

7) *9/2011-12/2015. Dr. **Ainka Granderson** (BA Hons Geography, Cambridge; MSc Cons. Biol & Sust. Dev, Wisconsin-Madison; PhD, Melbourne). Negotiating the future: Risk, meanings and politics in climate change adaptation in rural Vanuatu (IPRS and MIRS scholarships, Univ. Melbourne; CSIRO Adaptation Flagship top-up award)



Ainka is from Trinidad & Tobago, and studied in the UK and USA. Fieldwork in Vanuatu was done in 2013, with a return visit. Supervised with Prof. Rod Keenan. Runner up, '3 minute thesis' presentation competition, Uni Melb 2014. Now Director, Climate Change and Disaster Risk Reduction Programme at the Caribbean Natural Resources Institute, Trinidad.

- Granderson A.A. 2017. The role of traditional knowledge in building adaptive capacity for climate change: perspectives from Vanuatu. *Weather, Climate and Society* in press
- Granderson A.A. 2017. Value conflicts and the politics of risk: challenges in assessing climate change impacts and risk priorities in rural Vanuatu. *Climate and Development*. <http://dx.doi.org/10.1080/17565529.2017.1318743>
- Granderson A.A. 2014. [Making sense of climate change risks and responses at the community level: a cultural-political lens](#). *Climate Risk Management* 3: 55-64.
- Granderson A.A. 2011. [Enabling multi-faceted measures of success for protected area management in Trinidad and Tobago](#). *Evaluation and Program Planning* 34(3): 185-195.

8) 2012-2016 → Dr. **Peter Boateng** (BA hons. Geography, KNUST Ghana; MSc Development Management, U. Agder, Norway; PhD, Monash). *From arable savannah land to barren desert? A critical perspective on social and ecological interactions associated with land use and land cover changes in the savannahs of Northeast Ghana*. Geography, Monash University.



Main supervisor A/Prof Priya Rangan. I had a small role.

9) *PhD: 2008 → (part time) Dr. **Alex Cullen** (BA Hons, U. Western Australia) *Transitional environmentalism: conservation as territoriality in Timor-Leste*. (Australian Endeavour Postgrad Award, Fac. of Science write-up Award)



Fieldwork late 2010-early 2011. Alex (from Perth) did Honours in East Timor and returned there for a combination of work, language training and PhD study on land and livelihoods in the forest reserves of Suai and Nino Konis Santana National Park. Worked for Jon Unruh at McGill Univ. in 2012/3. Currently part-time tutor, OEP, University of Melbourne and establishing a small research film company. 2nd supervisor Dr Lisa Palmer. [His band](#)

- Cullen A. 2015. Making sense of claims across institutional divides: critical PGIS and mapping customary land in Timor-Leste. *Australian Geographer* 46(4): 473-490.
- Batterbury S.P.J., L.R.Palmer, T.Reuter, D. do Amaral de Carvalho, B. Kehi, A. Cullen. 2015. [Land access and livelihoods in post-conflict Timor-Leste: no magic bullets](#). *International Journal of the Commons*. 9(2): 619-647.
- Cullen, A. 2012. [A political ecology of land tenure in Timor Leste: environmental contestation and livelihood impacts in the Nino Konis Santana National Park](#). in M. Leach, N. Canas Mendes, A.B. da Silva, B.Boughton and A. daCosta Ximenes (eds.) *Peskiza foun kona ba / Novas investigações sobre / New Research on / Penelitian Baru mengenai Timor-Leste*. Hawthorn: Swinburne Press. 158-165.

10) *2009 → Dr. **Greg van der Horst** (MA, Geography, U. Guelph, BA King's University College, Canada) *"Everybody's business": Global Forest Governance and the socio-ecologies of commercial forestry in Sierra Leone*. (SSHRC Canada Doctoral Award; [FAO ACP-FLEGT](#) project; Sustainable Forestry Initiative)



Currently works in Sierra Leone and Benin with NGOs. 1.5yrs fieldwork 2011-12 in Sierra Leone (on right with FLEGT team). Canadian, did a Masters on urban fuelwood use and supply in Botswana.

- Munro P.G. and G. van der Horst. 2016. [Contesting African landscape: a critical reappraisal of Sierra Leone's competing forest cover histories](#). *Environment and Planning D: Society and Space*. 4(4): 706-724



- Munro P.G., G van der Horst, S Willans, P Kemeny, A Christiansen, N Schiavone, 2016 [Social enterprise development and renewable energy dissemination in Africa: the experience of the community charging station model in Sierra Leone](#) *Progress in Development Studies* 16:1 : 24-38
- Munro P.G. and G van der Horst. 2015. [Breaks with the past: conflict, displacement, resettlement and the evolution of forest socioecologies in Sierra Leone](#) in J. Lahai and T. Lyons (eds) *African frontiers: insurgency, governance and peacebuilding in post-colonial states*. Ashgate Publishing. pp 119-130.
- Kemeny P., P.G. Munro, N. Schiavone, G. van der Horst, S. Willans. 2014. Community Charging Stations in rural sub-Saharan Africa: commercial success, positive externalities, and growing supply chains. *Energy for Sustainable Development* 33: 228-236.
- Hiemstra-van der Horst, G. 2011. "We are scared to say no": facing foreign timber companies in Sierra Leone's community woodlands. *Journal of Development Studies* 47(4): 574-594.
- Munro, P.G. and G. Hiemstra-van der Horst 2011. [Conserving exploitation? A political ecology of forestry management in Sierra Leone](#). *The Australasian Review of Africa Studies* 32(1): 59-78.
- Hiemstra-van der Horst, G., P.G. Munro and S.P.J. Batterbury. 2011. [Les réseaux illégaux du pillage: la demande globale de bois et la \(re\)commercialisation des forêts d'Afrique de l'Ouest](#) (*The Second Scramble for Africa: global timber demand and the (re)commercialisation of West African forests*). *Écologie & Politique*.42: 47-58.

11) *Nov'12-Nov'16 **Dr. Marcela Chaves-Agudelo** (MSc Medio Ambiente y Desarrollo, BSc Biology, Universidad Nacional de Colombia) (*Re)meanings of nature in a neoliberal globalized modern world: three cases of Colombian indigenous ethnicities (Pijao, Cofan And Muisca-Chibcha)* (Francisco José de Caldas Scholarship for Doctoral Programs, Colciencias)

Marcela, from Colombia, did fieldwork in 2014-15 and was the life and soul of the PhDs student group at Melbourne. She previously studied biology and human-environment relationships (thesis on the Complejo Páramo de Guerrero), and worked in Colciencias, the Colombian national science organization in Bogotá. Other supervisors Prof. Ruth Beilin and Dr. Nohra León Rodríguez.

- Chavez-Agudelo, J.M., S.P.J. Batterbury and R.Beilin. 2015. ["We live from mother nature": neoliberal globalization, commodification, the 'war on drugs', and biodiversity in Colombia since the 1990s](#). *Sage Open* 5(3):1-15.
- various others on the way



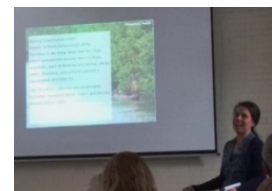
12) *Jul'12-Nov'16 → **submitted** Bunlong Leng (BEd, Royal U. of Phnom Penh, MS Urban Env't. Management, AIT, Thailand) *Walk the talk: mainstreaming climate change adaptation in donor-aided projects in Cambodia*. (Australian Leadership Award, AUSAID)

Fieldwork 2013-14. Bunlong worked at the World Bank in Cambodia from 2003, latterly as an Environmental Specialist in the Sustainable Development Department, and and taught and researched environmental topics at Cambodian universities. Currently back at the World Bank in Cambodia. 2nd supervisor Dr. Adam Bumpus.

13) *Feb.2013-Mar 2017 → **submitted** **Paula Satizábal** (MSc and BSc Biological Sciences, Universidad de los Andes, Colombia) *Marine small-scale artisanal fisheries in the Gulf of Tribugá, Colombia: the participatory process of creating a protected area* (Francisco José de Caldas Scholarship for Doctoral Programs, Colciencias).

Paula, from Colombia, studied conservation science and marine mammal biology before coming to Melbourne. Fieldwork 2014-5. 2nd supervisor Dr. Wolf Dressler. Local: Prof. Juan Camilo Cárdenas.

- Satizábal P. and Batterbury, S.P.J. In press. Fluid geographies: marine territorialisation and the scaling up of local aquatic epistemologies on the Pacific Coast of Colombia. *Transactions of the IBG*
- And another with W. Dressler
- Satizábal P. et al 2012. [Phylogeography and sex-biased dispersal across riverine manatee populations \(*Trichechus inunguis* and *Trichechus manatus*\) in South America](#). *PLoS One*. 7(12): e52468.





PhD students current (main supervisor *)

Wolf Dressler's arm, Denisse, Marcela, SB, Paula, Julia (Dec 2016 goodbye party)

1) *2009→ **writing up Christina Ellis** (MEnvStuds, York U., Canada) *Political ecology of resource wars and biodiversity: an evaluation of gorilla conservation in World Heritage Sites, Democratic Republic of Congo.* (SSHRC Canada Doctoral Award; Zoos Victoria)



European Commission Project Manager with International Alert, Goma, Congo since early 2014. Fieldwork mid 2010-late 2011 and 2012. Christina (on right with Jane Goodall) is a Canadian with 13 yrs experience working on primate conservation in Africa with the Jane Goodall Institute, WWF, Conservation International and others. 2nd supervisor Lisa Palmer.

- Alonso L.E., S. Bhalla, A. Bermudez, M.K. Cline, **C.M.E. Ellis**, L. Flores, R. González Montagut, M. Hurley, R. Kormos, P. Moreno-Casasola, A.L. Tjon Sie Fat. 2015. Violence against the environment: women taking action. In M.M. Kurtz and L.R. Kurtz (eds.) *Women, war and violence: topography, resistance and hope*. Santa Monica: Praeger.
- Tranquilli S. and 40 authors incl. **Ellis, C.M.E.** 2012. Lack of conservation effort rapidly increases African great ape extinction risk. *Conservation Letters* 5(1): 48–55.
- Ellis, C.M.E. and Nasi, R. 2010. *Approaches and tools for wildlife management in logging concessions: a systematic review*. Bogor Indonesia: Centre for International Forestry Research.
- Baldus RD, R Hahn, **CME Ellis** and S Dickinson DeLeon. 2007. Connecting the world's largest elephant ranges: The Selous–Niassa Corridor. In S. Ali (ed) *Peace parks: conservation and conflict resolution*. MIT Press.

2) *July 2014→**Frankline Ndi writing up** ([MSc Rural Development](#), Ghent U./Wageningen U. 2013: MSc Linnaeus U. Sweden, 2010: BA Buea U., 2005). *The corporatization of nature: institutional actors, processes and rural livelihood renegotiation. The case of South West Cameroon* (IPRS and MIRS scholarships, Social Equity Institute Doctoral Academy, Univ. Melbourne).



Frankline is from rural SW Cameroon, and studies in Buea, Sweden and Belgium/Netherlands. 2nd supervisor Dr Wolf Dressler.

- Ndi, F. and Batterbury, SPJ. 2017. [Land grabbing and the axis of political conflicts: insights from South-West Cameroon](#). *Africa Spectrum* 52(1): 33-63.
- Ndi, F. 2017. [Land grabbing, local contestation, and the struggle for economic gain: insights from Nguvi Village, South West Cameroon](#). *Sage Open* Jan-March:1-14.
- Batterbury, SPJ and Ndi, F. in press 2017. Land grabbing. In Binns T, Lynch K. & E.Nel (eds.). *Routledge Handbook of African Development*. Routledge.
- Ndi, F. submitted to *Development Policy Review*

3) * Feb 2015→ Denisse Rodríguez Quiñónez writing up (M Env. distinction, U. Melbourne 2014: MA, Intl. Relations, Andean U. Simon Bolivar 2010: B. Comm, Pontifical Catholic U., Ecuador, 2007). *The rights of nature, water governance and mining in Ecuador* (MIRS scholarship).



Denisse was previously a research assistant at Andean Univ., and a media figure and TV presenter in Ecuador. Second supervisors Dr Lisa Palmer and Dr. Erin Fitz-Henry.

- Rodríguez, D. 2013. [La banca de desarrollo en América Latina ¿Es posible su reformulación?](#) *Serie Magister* 129, UASB. Quito: Abya-Yala.
- Rodríguez, D. 2016. Experiencias comunitarias de gobernanza ambiental: el caso Kimsakocha. In Pablo, A. (ed.) *La gobernanza ambiental en Ecuador: historia, presente y desafíos*. Quito: Universidad Andina Simón Bolívar / Corporación Editora Nacional.

4) * Feb 2016→ Tessa Toumbourou doing fieldwork (M Env. & Hons. Politics, U. Melbourne, distinctions, 2012/2009: BA and Dip. Lang, Monash 2007/8). *Exploring the gender dimensions of land deal negotiations for palm oil in rural East Kalimantan, Indonesia*. (MRS scholarship).



Tess worked in Jakarta for the Asia Foundation 2012-2015 (forest governance and gender programs). She has scoped fieldwork in Kalimantan on the land transformation frontier. Second supervisor Dr. Wolf Dressler.

Second supervisor

5) March 2014 → writing up Julia Loginova (B. Circumpolar Studies, U. of Nordland, Norway and Dip.(Masters eqvt) in National Economics, Syktyvkar State University, Russia). *Coping with uncertainty as if people mattered: Russian institutional response to Arctic meltdown*. (MIRS scholarship)



Julia is from the Komi Republic, Russian Federation, and is based in the Faculty of Architecture, Building and Planning. 1st supervisor Dr. Anna Hurlimann & with Dr. Ole Fryd (U. Copenhagen, Denmark). Several international conference papers, consultancy work, and papers in preparation.

Masters students, current ()

Masters students, past (36)

Melbourne

2015 **Anne Drong (Master of Environment)** *Socio-economic impacts of environmental change in the coastal rural region of Bangladesh: A study of salinization, migration and local livelihood*.

Anne is from Bangladesh, and this project includes an internship. Article in progress.



2015 **Micaela Jara Forray** (Master of Environment, Distinction thesis) *Public participation in the politics of 'velomobility': the role of Melbourne civil-society organizations in moving towards sustainable transport*.

Micaela is a Chilean geographer who has worked in urban planning and transportation in Santiago; this project was in Melbourne.



2014-15 **Bernardita del Real Hobon** (Master of Urban Planning, Distinction thesis). *Cooperative bike workshops as community driven urban planning in France*.

Bernardita completed fieldwork in Paris and Strasbourg, France, in early 2015. Part of our bike workshops research team. <http://bikeworkshopsresearch.wordpress.com/> Possible paper



2014 **Peter Newbiggin** (Master of Environment with Distinction) *What influences are identified by subsistence farmers in Vanuatu on their uptake of new agricultural practices and technologies?*

Fieldwork, 2014 in Vanuatu. Peter is an agriculture and development consultant working in the Pacific and Africa.



2013-14. **Emilio Thodes** (Master of Urban Planning, thesis with Distinction) *Mining impacts on the urban landscape in Antofagasta, northern Chile.*

Fieldwork in Antofagasta, 2013-14. Worked on UniMelb cooperation with Chile and now as a planning consultant there.

- Emilio Thodes Miranda. 2016. [Segregación socioespacial en ciudades mineras: el caso de Antofagasta, Chile](#). *Notas de Población* 102(enero-junio): 203-227.



2013. **Elliot Child** (Master of Environment with Distinction) *The political ecology of “post-neoliberal” gas: extraction, conflict and the making of an unstable commodity in Bolivia.*

Since 2014, Elliot is a PhD student in Geography at UBC, Canada with Trevor Barnes. Fieldwork in Bolivia, Jan 2013.



2012 **Rhedyn Law** (Master of Urban Planning) *Between a rock and a hard place: effective public participation through community consultative committees in mining in NSW, Australia: a case study of the Dargues Reef Community Consultative Committee.*

Fieldwork on a gold mine and its community relations in NSW. Planning Consultant at Resource Management Group, Wellington, NZ.



2012 (**Ariel**) **Nguyễn Thị Cát Tường** (Master of Environment with Distinction). *Understanding the pattern of transport behavior in Ho Chi Minh City, Vietnam.*

Fieldwork completed in HCMC, mid 2012. CHANGEVN, environmental NGO. Formerly Lecturer at HCMC University of Transport, Vietnam.

- Nguyen Thi Cat Tuong. 2014. [Determinants of private mode choice in Ho Chi Minh City, Vietnam: from the individual perspective](#). *World Transport Policy and Practice* 18(1): 56-69.



2012 (completed 2013) **Sue Noy** (Master of Environment with Distinction). *The interactions between students’ interdisciplinary sustainability learning and a student-focussed pedagogy in a higher education setting.*

Sue teaches sustainability at Deakin University and was on the Board of Environment Victoria.



2011-12. **Julie Hunter** (Master of Environment with Distinction). *The disconnect in ‘engendering’ climate change adaptation: a case study of Bangladesh (research review)*

Now at Volare Travel Group, Sydney, formerly social and environmental consultant at Parsons Brinckerhoff.



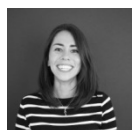
2010. **Vicki Chantra**. (Master of Environment with Distinction) *Postconflict environmental peacebuilding in Sierra Leone. (and a shorter study of climate adaptation in the Pacific)*

Consultant at AECOM. Was Policy Officer, Security and Emergency Management, Department of Premier and Cabinet, Victoria 2010-12 dealing with floods and other issues.



2010. **Gabriela Ramos Bahena**. (Master of Environment). *Values and environment: a review of the literature in environmental behaviour.* (research review)

Marketing coordinator, Aesop products, New York. Worked for the Centre for Sustainability Leadership for 1.5yrs, then Melbourne Symphony Orchestra.



2008-10 **Jess Fritze** (Master of Environment with Distinction). *Equity in Australian climate change policy.*



[Research manager](#) at Climateworks, Monash University. Worked at Victoria Legal Aid on social justice. Previously climate policy specialist, Vic Council of Social Service. Several papers on climate policy. e.g.

- Wiseman J., L. Williamson, & J. Fritze, 2010. [Community engagement and climate change: learning from recent Australian experience.](#) *International Journal of Climate Change Strategies and Management* 2(2):134-147.
- Fritze, J. & J. Wiseman. 2009. Climate justice: key debates, goals and strategies. In Moss J. (ed) *Social justice and climate change.* Melbourne University Publishing. Pp187-220.
- Fritze J, Blashki G, Burke S, Wiseman J. 2008. [Hope, despair and transformation: climate change and the promotion of mental health and wellbeing.](#) *International Journal of Mental Health Systems.* 2:13.
- [On Video](#) 2010

2008. **Ruqun (Susie) Wu 吴佳宸** (Master of Environment). *Organic cotton: a sustainable alternative?*

Did an LCA analysis of organic cotton. Product Sustainability Consultant, ECOVANE, Beijing.

<http://www.ecovane.cn/>

- Wu, R. 2009. [Energy efficiency technologies – air source heat pump vs. ground source heat pump.](#) *Journal of Sustainable Development* 2(2):14-23.

2005-6 **Marelize Görgens-Albino.** (MA, Devt. Studs.) *Monitoring AIDS/HIV programs in Southern Africa.*



Passionate HIV/AIDS campaigner from South Africa. Now works at World Bank Global HIV/AIDS Program.

- Gorgens M., J. Zall Kusek. 2009. [Making monitoring and evaluation systems work: a capacity development toolkit.](#) World Bank.
- Gorgens M N Mohammad, D Blankhart & MDO Oluwole. 2007. *The Africa multi-country AIDS Program 2000-2006: results of the World Bank's response to a development crisis.* World Bank.

2006 **Finn Cheshire.** (MA, Devt. Studs.) *Postconflict humanitarian coordination in Liberia.* (UN Internship)

Diplomat, Senior Policy Officer, New Zealand Ministry of Foreign Affairs & Trade, Wellington, NZ. A UN internship in Liberia for fieldwork, followed by working as a researcher for Oxfam New Zealand. Then Deputy High Commissioner, New Zealand Ministry of Foreign Affairs, the Solomon Islands.

2005 Dr. [Adrian Albano.](#) (MA, Devt. Studs.). *Indigenous forest enterprise development in the Philippines.*

Interesting Masters was on indigenous forest livelihoods followed by work at CIFOR, Bogor, Indonesia and ICRAF. Awarded a PhD in Area Studies, Kyoto University, Japan (2013). Now doing consultancy work in the Philippines.

- Albano, A. and Takeda. 2014. Conserving forests in privatized commons: trends and management options in an Ifugao Village, Philippines. *Small Scale Forestry* 13(1): 1-17.
- Pandit BH, AL Albano and C. Kumar. 2009. Community-based forest enterprises in Nepal: an analysis of their role in increasing income benefits to the poor. *Small-Scale Forestry* 8(4)
- Regmi B, AL Albano, C Kumar. 2008. [Improving the livelihoods of the poor and marginalized in Nepal through leasehold forestry: a review of institutional constraints and opportunities.](#) Centre for International Forestry Research (CIFOR)
- Phanbuh S, AL Albano, V Darlong. 2008. [Forest-based interventions of Nercormp in Meghalaya, India.](#) (North Eastern Region Community Resource Management Project for Upland Areas). IFAD & Govt of India.

2005 **Sunil Sharma.** (MA, Devt. Studs.). *Public-private partnerships for ecotourism development in Nepal.*



Now doing a great job as Manager, Nepal Tourism Board.

2005 **Joyce Njoba**. (MSc, Agribusiness). *Farmers defining sustainability: the identification of the social, environmental and economic interactions in cashew nut production in Kenya*. 1st supervisor Prof. Ruth Beilin.

2005 **Bella Whittle**. (MA, Devt.Studs.). *The model forest as an approach to good governance: Ngao model forest, Lampang, Thailand*.

Parliamentary Commissioner for the Environment office, Wellington, New Zealand. Formerly EPA and Pesticide Action Network, Asia & the Pacific.

- Whittle, B. 2010. *Communities in peril: Asian Regional Report on community monitoring of highly hazardous pesticide use*. PAN.



2004 **Lanie Stockman**. (MA, Devt.Studs.) *Guaranteeing a better deal for Third World producers? Thien Hoang Organic Tea Farmer Cooperative, Vietnam*.

Outcomes and Evaluation Specialist, Good Shepherd Australia New Zealand. Formerly Program Quality Advisor, Save the Children Australia, Melbourne.



Arizona

Masters committee member: Louise Every (graduated 2004, now senior environmental advisor, Bristol UK), Dr Katie Meehan (now U. of Oregon faculty), Rebecca Drummond (2004, now College of Public Health, U. of Arizona), Dr Jimmy Klepek (2004. Independent researcher), Andrew Clark (2004), Jason Welbourn (2004), Alison Schneider (2003), Kristen Reed ([Renegotiating Urban Water management in Flagstaff, Arizona](#) 2003), Jen Shepherd (2003, now conservation specialist), Dr Erika Trigoso (2003, now teaching assistant professor, University of Denver).

LSE

Supervisor to 11 Masters students at LSE (1999-2001). All placed in international environmental positions – e.g. 4 at United Nations in Geneva and New York, 2 World Bank junior officers, Policy Studies Institute, 2 did PhDs at Oxford. <http://tinyurl.com/3yfczo6>

Brunel

1999 **Constant Kwitegetse** (M. Emt Change) *Soil erosion and land use change in SW Uganda*

ICGM, Bicester, UK.

1999 **Claire Wilton** (M. Emt Change, with Distinction) *Good citizens and eco-warriors: environmental direct action and citizenship in Britain 1992-1998*.

Claire was Environmental Justice coordinator and senior campaign manager, Friends of the Earth UK until 2009. She is now Adult literacy tutor at City of York Council, UK. <http://vimeo.com/17534404>

1999 **Shelley Braithwaite** (M. Emt Change, with Distinction) *Evaluation of the impacts of Shell's oil mining programme, Ogoniland, Nigeria*.

Australian, formerly an environmental and rights activist in London, Oxford and Nigeria. Fieldwork was risky. Last heard a decade ago establishing reserves at the Parks and Wildlife Group, Dept. Emt.& Climate Change, Coffs Harbour, NSW Australia.

- Braithwaite S. 1999. Profits above principles: agenda appropriation through public relations and sponsorship. *Philosophy & Geography* 2 (2): 246–248.

1998 **Danny Wooton** (M. Emt Change) *Improving access to environmental information in Romania*

Formerly environmental information specialist, Powerful Information, UK. Whereabouts unknown.

Honours students, past (14)

Lancaster (British system-final year project)

2017 **Emily Brookes** Recreational use of dunes in Michigan

2017 **Tom Higham** - Gentrification in Salford

Melbourne (Honours is a whole extra undergraduate research year with thesis, in Australia)

2016 **Rhori Stein** (BA Hons Geography, B Env, Melbourne) *Boom and bust: an insight into Portuguese post-colonial 'reverse-migration' to Angola.*

Article in prep. From late 2017, doing MSc Innovation, Entrepreneurship and Management, Imperial College London.



2014 **Heather McGirr** (BA Hons Geography, BA Canberra Univ.) *Perceptions of food sources in Melbourne and southern California.*

Now living in southern California and working for PETA.

- McGirr, H.K. and S.P.J. Batterbury. 2016. Food in the city: urban food geographies and 'local' food sourcing in Melbourne and San Diego County. *Geographical Research* 54(1): 3–18



2012 **Iain Elgin-Stuczynski** (BA Hons, Geography) *An analysis of perceptions of and adaptations to climate change in dairy farms in Corangamite Shire, VIC.*

Did an MBA at City University, London. Worked at CBRE Agribusiness, Melbourne 2012-14.

- Elgin-Stuczynski I. and Batterbury SPJ. 2014. [Perceptions of climate variability and dairy farmer adaptations in Corangamite Shire, Victoria, Australia.](#) *International Journal of Climate Change Strategies and Management* 6(1): 85-107.



2010. **Jessie McMaster** (BSc Hons Geography with Distinction, BSc Science) *Aquaculture in the Mekong Delta, Southern Vietnam.* (JJ Wood scholarship, in-kind support from DPI Victoria)

Has worked around Colac, VIC from 2010, currently at Corangamite CMA in Anglesea. Article in revision.



2010. **James Plant** (BA Hons Geography with Distinction I think) *Governing climate change adaptation at the local level: an analysis of the responses and responsibilities of South-Western Victorian coastal councils.* (PIARN scholarship)

Went to state government, Victoria, young professionals program

2010. **Josh Fisher** (BA Hons, Geography) *Public attitudes towards urban consolidation (Melbourne).*

2009. **Sean Bain** (BA Hons, Development Studies, Distinction) *Conflict in contemporary Timor-Leste: interventions and identities.*

NGO worker, Myanmar. Worked at Oxfam, and did an AYAD internship in Dili, East Timor. Finished postgrad in Law, ANU. Photo with the East Timorese PM



2006 **Jane Torney**. (BA Hons, Devt.Studs.) *The World Bank and Rwanda: ignoring ethnicity?*

Jane did an M.P.H at Monash. Now Gender Equity Officer Manager, City of Monash. Was an AYAD volunteer in Thailand and in NGO/local government posts.

- HealthWest Sexual & Reproductive Health Working Group 2010. *Sexual and Reproductive Health: Healthwest catchment profile*. HSRHWG. <http://www.whwest.org.au/docs/SRHreport.pdf>

2006 **Dr. Kamakshi Mubarak**. (BA Hons, Geography, with Distinction) *Analyzing post-tsunami livelihoods recovery: the case of masons in Polhena village, Sri Lanka*. (JJ Wood scholarship).

Young Professional, the World Bank, Washington DC, USA, 2015>. Was social specialist, Colombo Urban Development Project, Sri Lanka. Completed a DPhil in Geography, University of Oxford, UK, 2011. Thesis "Analysing post-tsunami livelihoods recovery and sustainable development in Sri Lanka" (Clarendon Scholarship and Keble College scholarship, tutor at Jesus College).

- Perera-Mubarak, K. 2014. Power play: ethical dilemmas of dealing with local officials and politicians, In Lunn, J (ed.) *Fieldwork in the Global South: ethical challenges and dilemmas*. Routledge pp. 206-216.
- Perera-Mubarak, K.N. 2012. Reading 'stories' of corruption: practices and perceptions of everyday corruption in post-tsunami Sri Lanka. *Political Geography* 31(6): 368-378.
- Perera-Mubarak, K.N. 2013. Positive responses, uneven experiences: intersections of gender, ethnicity, and location in post-tsunami Sri Lanka. *Gender, Place & Culture*
- Mubarak, K. 2007. *Analyzing post-Tsunami livelihoods recovery: the case of Masons in Polhena Village, Sri Lanka* SSEE Research Paper No. 2, U. of Melbourne. <http://tinyurl.com/65qf2aq> (thesis version-original document not on web)



2006 **Harriet Moore**. (BA Hons, Env't Studs.) *Strategic forest management in a Karen community, Thailand*.

Tutor and lecturer at Australian Catholic University. M. Environment 2012, University of Melbourne. PhD in Geography on river management, University of Melbourne 2012-17 (APA).



2006 **Anna O'Brien**. (BA Hons, Geography) *Adaptive capacity and climate change, Urana Shire, NSW*.

Consultant, [Environment & Heritage Partners](#), Melbourne. Was Southern Otways Landcare coordinator, VIC. until 2010.

- <http://www.smh.com.au/travel/walk-with-purpose-20100527-wg7m.html>



Brunel

1999. **Sally Denbigh** (BA Geography Honours, First class). *Eco tourism in Nepal*.

Now a PhD student at the School of Anthropology & Conservation, University of Kent, UK, studying 'Environment, conservation & philanthropy' (ESRC). Was at the Celia Hammond Animal Trust, UK and did a PG Dip in Env't, Policy & Society, at the Open University (2003).



1999. **Duncan Rae** *An analysis of the causes and effects of conflicts between users of shared-use paths*.

.....& others I have unfortunately forgotten....

Home www.simonbatterbury.net

